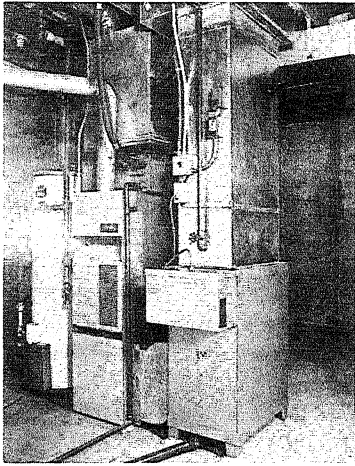


# Electro-air® ELECTRONIC AIR CLEANERS

**WATER WASH  
ELECTRONIC AIR CLEANERS**  
MODELS WW-10-H/V, WW-14-H/V, WW-20-H/V



**TYPICAL WATER WASH INSTALLATION**—This vertical flow unit has been installed with a hand valve wash control. The cabinet is reversed for right to left airflow.

## A. APPLICATION

The electronic air cleaner is a product that is designed to remove dirt, dust cooking and tobacco smoke, bacteria, pollen and other airborne contaminants from the air circulating through a forced air heating/cooling system.

The dirt particles are electrostatically charged in a collecting cell that consists of an ionizing section and a series of aluminum plates. The dirt particles cling to the plates, allowing clean air to recirculate throughout the air handling system.

Water Wash units are deluxe models specifically designed for installation in residential buildings. They feature extra-large collecting cells for increased dirt loading capacity, and a built-in water manifold that washes the cell without disassembling the unit.

Three CFM sizes are available: 1,000, 1,400 and 2,000 CFM. Each CFM size is available in both horizontal and vertical configurations, making a total of six models in the entire line.

## B. MAJOR PARTS

The Water Wash unit is composed of the following components:

- 1. COLLECTING CELL**—This component consists of an ionizing section, that is constructed of tungsten wires suspended between electrodes, and a series of parallel aluminum plates. The dirt particles are electrostatically charged in the ionizing section and collected on the cell plates.
- 2. POWER PACK**—The electrical components required to furnish high voltage current for the collecting cell are housed here. The power pack consists of a transformer, two capacitors and two selenium rectifiers. An indicating light showing that power is being supplied to the air cleaner is mounted to the front. An ON/OFF rocker switch is also positioned on the front.
- 3. WATER MANIFOLD**—This deluxe feature consists of a  $\frac{3}{4}$ " copper pipe, fitted with spray nozzles, that is positioned above or beside the collecting cell. The manifold is connected to a hot water supply. When the hot water is permitted to enter the manifold, it sprays the dirty collecting cell until it is flushed clean. A drain connection in the bottom of the cabinet carries away the dirty water.
- 4. CABINET**—The cabinet and power pack housing are constructed of heavy-duty, 18 gauge steel. Duct connections are easily made with the air outlet collar.

Vertical units are manufactured for airflow down and out the right side. Horizontal cabinets are shipped with airflow from left to right. The direction of airflow can be changed easily if the installation requires it.

## C. PACKAGING

Water Wash units are shipped in two cartons. The larger carton contains the cabinet that is shipped with the cell, manifold and after filter in position.

The smaller carton contains the power pack, high tension lead and thru-bushing. Vertical units are shipped with legs attached. Optional legs for horizontal units can be ordered as an accessory.

